

Dear Parents/Carers,

We hope you and your family are keeping well.

We have created this handout to support parents and pupils across Swansea during these unprecedented times. You may feel you have more than enough to occupy and motivate your child over the coming weeks e.g. cooking activities, creative play, family time, outdoor activities if you have a safe garden space. Play is absolutely vital to a child's development, so please do not feel obliged to undertake any additional activities with your child – these are just suggestions! We have included some strategies which may be helpful to use while you play or do everyday activities with your child, to encourage their language development.

Should you feel that your child's hearing difficulties are preventing or hindering them accessing learning at home and you would like some additional support, please feel free to contact the Teacher of the Deaf involved with your child. Whilst it is not possible at the current time to visit your child at home, if you have any concerns about your child's learning we are able to discuss and offer advice and support over the phone/via email.

We hope you stay safe and well!

Misha Goremano – misha.goremano@swansea.gov.uk

Sarah Svensson – sarah.svensson@swansea.gov.uk

Tricia Garland – tricia.garland@swansea.gov.uk

Teachers of the Deaf

Audiology Support

For any concerns relating to your child's hearing aids or hearing you should contact the Audiology Department. The Department can carry out repairs via post and may be able to see patients who have a very urgent need. Hearing aid batteries can be posted out on request. Please contact:

Singleton Audiology: 01792 285270

Email address: audiology.singleton@wales.nhs.uk (This is the best form of contact)

Helping Children Understand Corona Virus

Brainpop Video:

<https://www.brainpop.com/health/diseasesinjuriesandconditions/coronavirus/>

Free PDF book:

<https://www.mindheart.co/descargables>

Corona Virus Information in BSL:

<https://www.signhealth.org.uk/coronavirus/>

Language Strategies

- Make sure your child is looking towards you when you communicate (to see your signing or lipreading and expressions).
- Model language throughout the day: talk about what you are doing. Label the items you are using and describe actions and events.
- Repeat, repeat, repeat – repetition is important – children need to hear words or see signs lots of times before they are ready to use them.
- Use pictures, visual prompts, and signs to help with understanding.
- Be aware that your child may struggle to follow conversations in a group of people or if everyone is talking at once. Include them by translating to BSL (if they use it), by repeating what has been said and/or taking turns to speak.
- Use subtitles for videos.

“Blank” Comprehension Questions

These are some questions that you can use throughout the day with your child (while chatting, playing, reading a book, etc.) to help build their vocabulary and understanding.

Level 1 (naming what the child sees, simple instructions)

Point to the...	Find another... like this one.
What is this? (With object in sight)	I wonder if/what?
What just happened?	Point to the....

Level 2 (Describing things, who/what/where)

You ... (eat) with a...	Name another....
What else belongs in the...?	Find a red ball/big teddy/something soft.
Who? Where? What?	What is happening in the picture?
What is different about a ... and a ...?	What category does it belong to?

Level 3 (Re-telling, simple predictions, generalising)

What will happen next?	How do you think he feels?
What does ... mean?	How are these the same?
Put the ... in the box, put the lid on and give it to me (following directions)	
What do we need to do first/next?	Find something else made of...

Level 4 (problem-solving, predictions, explanations)

What will happen if...?	What should we do now?
What could you/they do if...?	What do you need in order to...?
How did it happen?	What made him feel/do...?
Why can't we...?	How can you tell/do you know...?
Why is it called a...?	Can you find another way to show that...?
Why do you think...? Why did you choose...? Why did that happen?	



Parent Information & Support

NDCS Corona Virus Info for Families:

<https://www.ndcs.org.uk/blog/coronavirus-and-support-for-deaf-children-information-for-families/>

NDCS Supporting Your Child's Learning:

<https://www.ndcs.org.uk/information-and-support/language-and-communication/supporting-your-childs-learning/>

NDCS YouTube Channel:

<https://www.youtube.com/user/ndcswebteam/featured>

BSL Educational Resources

BSL Story Book Videos from Elmfield School (scroll to bottom of the page):

<https://www.elmfield.bristol.sch.uk/BSL-Signed-Stories/>

More BSL Story Book Videos from Frank Barnes School:

<https://vimeo.com/user110101185>

ITV Signed Stories App (many books are currently free):

<https://www.signedstories.com/apps/british-sign-language>

BSL Curriculum Terms Dictionary (there is also an App):

<http://www.ssc.education.ed.ac.uk/bsl/>

Educational Resources

BBC Bitesize Videos

<https://www.bbc.co.uk/bitesize>

Play Ideas for All Ages:

www.maketime2play.co.uk

List of Companies offering free subscriptions due to school closures :

www.kidsactivitiesblog.com/135609/list-of-education-companies-offering-free-subscriptions/

The Royal Association for Deaf people (RAD) has a weekly timetable of activities:

<https://twitter.com/royaldeaf/status/1242123444222918656#>

Widgit Online Free Access : www.widgitonline.com/offer. (Use code WIDGIT30 for 30 day free trail)

Other useful links:

Website Links:

www.ndcs.org.uk

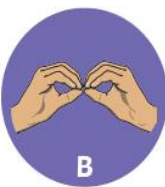
www.actiononhearingloss.org.uk

www.earfoundation.org.uk

www.bda.org.uk

www.swansea.gov.uk

www.robertsaudiosolutions.co.uk



**Fingerspelling
Alphabet**

Emotions and Feelings



angry



cold



confused



embarrassed



excited



grumpy



happy



hot



nervous



poorly



sad



scared



surprised



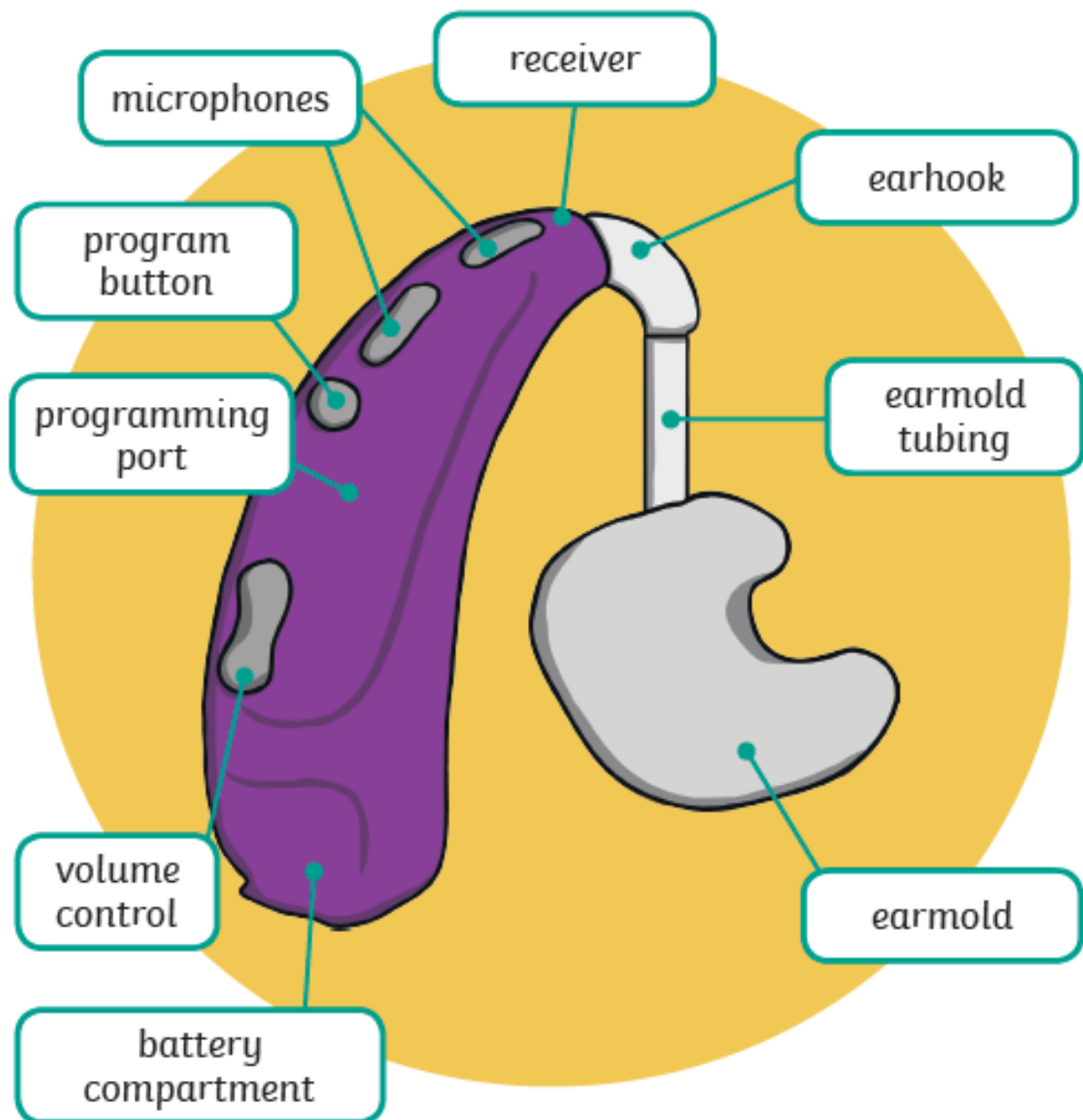
tired



worried

Hearing Aid

These are the parts of a behind-the-ear hearing aid that can be seen from the outside.



Cochlear Implant

This part of a cochlear implant is called the **sound processor**. It is the part of the implant that can be seen from the outside.

